

ABBREVIATIONS

AB	AGGREGATE BASE	MG	MILLION GALLONS
ABANDON	ABANDON	MIN	MINIMUM
ABS	ACRYLONITRILE-BUTADIENE-STYRENE	MISC	MISCELLANEOUS
AC	ASPHALT CONCRETE	MJ	MECHANICAL JOINT
ACP	ASBESTOS CEMENT PIPE	MON	MONUMENT
AD	ALLEGED DIFFERENCE	MSL	MEAN SEA LEVEL
ADA	AMERICANS WITH DISABILITIES ACT	N	NORTH
ADPT	ADAPTER	NG	NATURAL GROUND
AGG	AGGREGATE	NO.	NUMBER
ALUM	ALUMINUM	NA	NOT APPLICABLE
ANG	ANGLE	NIC	NOT IN CONTRACT
AP	ANGLE POINT	NPT	NATIONAL PIPE THREAD
APN	ASSESSORS PARCEL NUMBER	OC	ON CENTER
APPROX	APPROXIMATE	OD	OUTSIDE DIAMETER
ARV	AIR RELEASE VALVE	OH	OVERHEAD
AVF	AVENUE	OZ	OUNCE
AVG	AVERAGE	PA	PLANTER AREA
BC	BEGIN HORIZONTAL CURVE	PB	PULL BOX
BFP	BACKFLOW PREVENTER	PC	POINT OF CURVATURE
BLVD	BOULEVARD	PCC	POINT OF COMPOUND CURVATURE
BM	BENCHMARK	PCC	PORTLAND CEMENT CONCRETE
BO	BLOWOFF	PD	PLANTER DRAIN
BOC	BACK OF CURB	PE	PLAIN END
BV	BUTTERFLY VALVE	PEC	PHOTOELECTRIC CELL
BVC	BEGIN VERTICAL CURVE	PED	PEDESTRIAN
BSW	BACK OF SIDEWALK	PSD	POINT OF SLOPE DRAIN
BT	BOTTOM OF TAPER	PI	POINT OF INTERSECTION
B&R	BRELJE & RACE	PV	POST INDICATOR VALVE
C	CONDUIT	PN	PAVING NOTCH
CAV	COMBINATION AIR AND VACUUM RELEASE VALVE	PCC	POINT OF CONNECTION
CB	CATCH BASIN	PCC	POINT ON CURVE
CBG	CALIFORNIA BUILDING CODE	PCC	POINT OF COMPOUND CURVE
CD	CONTROLLED DENSITY FILL	POVC	POINT ON VERTICAL CURVE
CHK	CHECK	POS	PRIVATE OPEN SPACE
CI	CAST IRON PIPE	POT	POINT OF TANGENT
CIPP	CAST-IN-PLACE PIPE	PP	POWER POLE
€	CENTERLINE	PRC	POINT OF REVERSE CURVATURE
CL	CENTERLINE	PRV	PRESSURE REDUCING VALVE
CLAS	CLASS	PSD	PERFORATED SUBDRAIN
CLR	CLEAR	PSI	POUND PER SQUARE INCH
CMP	CORRUGATED METAL PIPE	PSV	PRESSURE SUSTAINING VALVE
CMPA	CORRUGATED METAL PIPE ARCH	PT	POINT OF TANGENCY
CMU	CONCRETE MASONRY UNIT	PUE	PUBLIC UTILITY EASEMENT
CO	CLEANOUT	PVC	POLYVINYL CHLORIDE
COAX	COAXIAL CABLE	PVC	POINT OF VERTICAL INTERSECTION
CONC	CONCRETE	PVMT	PAVEMENT
COND	CONDUIT	PWE	PUBLIC WATER EASEMENT
CONST	CONSTRUCTION	RADIUS	RADIUS
CONT	CONTINUOUS	RAW	RAW WATER
COTG	CLEANOUT TO GRADE	RC	RELATIVE COMPACTION
CP	CONTROL POINT	RCB	REINFORCED CONCRETE BOX
CPLG	COUPLING	RCB	REINFORCED CONCRETE PIPE
CR	CURB RETURN	RD	ROAD
CSP	CORRUGATED STEEL PIPE	RD	ROOF DRAIN
CT	COURT	RED	REDUCED
CTB	CEMENT TREATED BASE	REF	REFERENCE
CTR	CENTER	ROW	RIGHT OF WAY
CY	CUBIC YARD	RWPB	REDUCED PRESSURE
C/C	CURB TO CENTER	RPM	RAISED PAVEMENT MARKER
C&G	CURB AND GUTTER	RSC	REMOTE SUPERVISORY CONTROL
DBL	DOUBLE	RT	RING TIGHT
DDC	DOUBLE CHECK DETECTOR CHECK	RT	RECYCLED WATER
DDC	DOUBLE CHECK VALVE	RWL	RAIN WATER LEADER
DDC	DOUBLE DETECTOR CHECK	R/W	RIGHT OF WAY
DET	DETECTOR	S	SOUTH
DH	DETECTOR HANDHOLE	S	SLOPE
DI	DROP INLET	S.A.D.	SEE ARCHITECTURAL DRAWINGS
DIA	DIAMETER	SCADA	SUPERVISORY CONTROL AND DATA ACQUISITION
DIP	DUCTILE IRON PIPE	SCH	SCHEDULE
DLC	DETECTOR LOOP CONDUIT	SD	STORM DRAIN
DR	DRIVE	SDBC	STORM DRAIN CATCH BASIN
DS	DOWNSPOUT	SDCO	STORM DRAIN CLEANOUT
DWG	DRAWING	SDC	STORM DRAIN DROP INLET
DWR	DASHED WHITE PAVEMENT MARKER	SDE	STORM DRAIN EASEMENT
DWY	DRIVEWAY	SDMH	STORM DRAIN MANHOLE
DY	DOUBLE YELLOW	SE	SEWER EASEMENT
DYR	DASHED YELLOW RAISED PAVEMENT MARKER	SE	SEE ELECTRICAL DRAWINGS
E	EAST	S.F.	SQUARE FEET
EA	END HORIZONTAL CURVE	SG	SUBGRADE
ECC	ECCENTRIC	SIG	SIGNAL
EFTL	EFFLUENT (SEWER)	SL	STREET LIGHT
EG	EXISTING GROUND	S.L.D.	SEE LANDSCAPE DRAWINGS
EL	ELEVATION	SOF	SUP ON FLANGE
ELEC	ELECTRICAL	SO	SIDE OPENING (SD)
ELL	ELBOW	S.P.D.	SEE PLUMBING DRAWINGS
EP	EDGE OF PAVEMENT	SPEC	SPECIFICATION
EQ	EQUAL	SS	STAINLESS STEEL
ESQMT	EASEMENT	SSC	SANITARY SEWER
EVC	END VERTICAL CURVE	SSCO	SANITARY SEWER CLEANOUT
EW	EACH WAY	SSS	SEE STRUCTURAL DRAWINGS
EX	EXISTING	SSMH	SANITARY SEWER MANHOLE
F	FIRE	ST	STREET
FA	FIRE ALARM	STD	STANDARD
FC	FACE OF CURB	STL	STEEL
FCA	FLANGED COUPLING ADAPTER	SVC	SERVICE
FDC	FIRE DEPARTMENT CONNECTION	SWE	SIDEWALK EASEMENT
FES	FLARED END SECTION	SY	SQUARE YARDS
FF	FINISHED FLOOR	SWL	SOLID WHITE LINE
FG	FINISHED GRADE	T	TANGENT
FH	FIRE HYDRANT	TAN	TANGENT
FL	FLOWLINE	TOP	TOP OF BOX
FLG	FLOWLINE	TOP	TOP OF SLAB
FLSO	FLOWLINE OF SIDE OPENING	TS	TRAFFIC SIGNAL
FLEX	FLEXIBLE	TT	TOP OF TAPER
FM	FORCE MAIN (PRESSURE)	TW	TWO WAY LEFT TURN LANE
FRP	FIBERGLASS REINFORCED PLASTIC	TYP	TYPICAL
FT	FEET	UC	UTILITY CHASE
FTG	FOOTING	UFFG	UNDER FLOOR FINISHED GRADE
GAL	GALLON	UG	UNDERGROUND
GALV	GALVANIZED	UNO	UNLESS NOTED OTHERWISE
GB	GRADE BREAK	V	VOLT
GPM	GALLONS PER MINUTE	V	VERTICAL CURVE
GRD	GROUND	VCP	VITRIFIED CLAY PIPE
GSP	GALVANIZED STEEL PIPE	VERT	VERTICAL
GV	GAS VALVE	VG	VALLEY GUTTER
GV	GATE VALVE	VLT	VAULT
HB	HOSE BIBB	W	WEST
H	HEADER BOARD	WB	WATER
HOG	HOT DIP GALVANIZED	WBD	WALL BACK DRAIN
HDPE	HIGH DENSITY POLYETHYLENE	WM	WATER METER
HORIZ	HORIZONTAL	WNF	WELD NECK FLANGE
HIP	HIGH POINT	WS	WATER SERVICE
HPG	HIGH PRESSURE GAS	WSS	WATER SAMPLING STATION
HPS	HIGH PRESSURE SODIUM	WT	WEIGHT
HT	HEIGHT	WTR	WATER
HWY	HIGHWAY	WV	WATER VALVE
IC	INTERCONNECT	WWF	WELDED WIRE FABRIC
ICV	IRRIGATION CONTROL VALVE	YD	YARD
ID	INSIDE DIAMETER		
INV	INVERT		
IP	IRON PIPE		
IPS	IRON PIPE SIZE		
IRR	IRRIGATION		
ISA	INTERNATIONAL SYMBOL		
JB	JOINT BOX		
JP	JOINT POLE		
JT	JOINT TRENCH		
KV	KILOVOLT		
L	ARC LENGTH		
L	LENGTH		
LAT	LATERAL		
LF	LINEAL FEET		
LG	LIP OF GARAGE		
LG	LIP OF GUTTER		
LMA	LANE LINE		
LMA	LUMINAIRE MAST ARM		
LN	LANE		
LP	LOW POINT		
LT	LEFT		
LUM	LUMINAIRE		
MAX	MAXIMUM		
MB	METAL BOX		
MBGR	METAL BEAM GUARD RAIL		
MFR	MANUFACTURE		

LEGEND

BOUNDARY

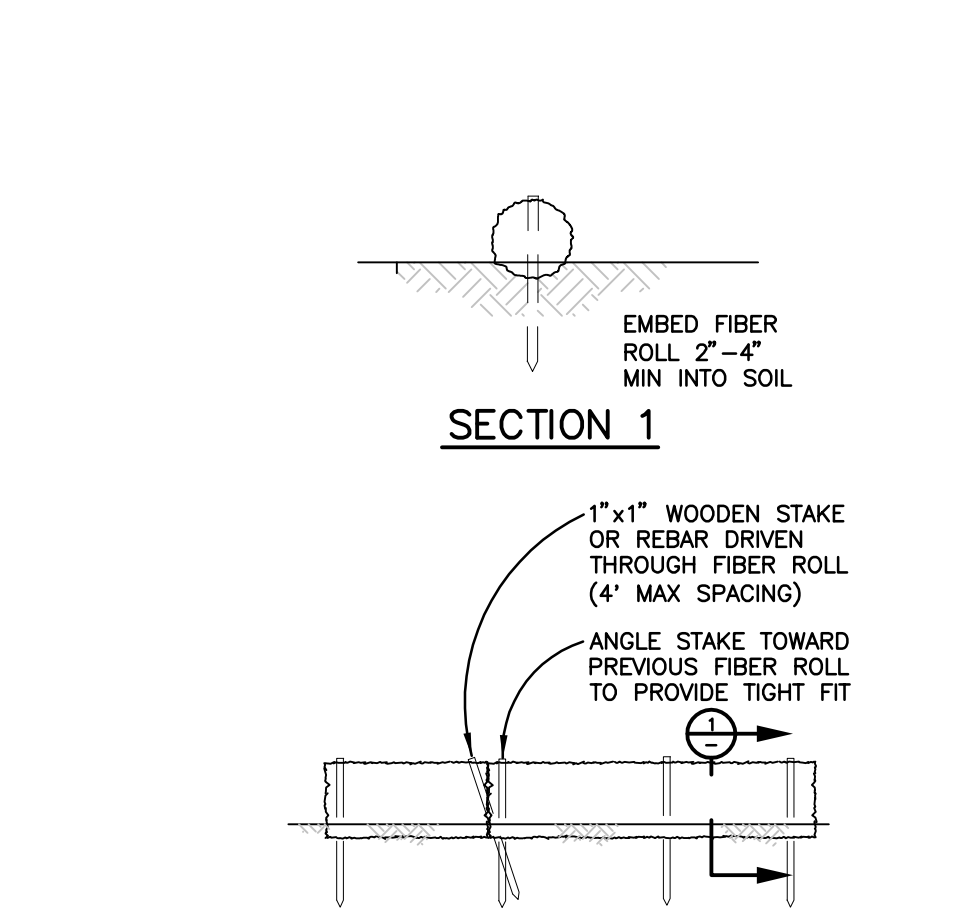
BOUNDARY	---
PARCEL	---
CENTER	---
EASEMENT	---

UTILITY LINES

STORM DRAIN	24" SD	24" SD
WATER	8" W	8" W
SEWER	12" SS	12" SS
GAS	3" G	12KV E
ELECTRICAL	E	12KV E
TELEPHONE	T	
TELEVISION	TV	
JOINT TRENCH	JT	

TOPOGRAPHY

DROP INLET		
DROP INLET WITH SIDE OPENINGS		
WATER METER		
WATER VALVE		
BLOWOFF		
FIRE HYDRANT		
THRUST BLOCK		
GAS METER		
STORM DRAIN MANHOLE		
STORM DRAIN CATCH BASIN		
SEWER MANHOLE		
SEWER CLEANOUT		
JOINT POLE		
LIGHT STANDARD		
GUY/ANCHOR		
CURB & GUTTER		
AC DIKE		
FENCE		
CHAIN LINK FENCE		
DITCH/SWALE		
MONUMENT		
TREE PROTECTION		
TREE TO BE SAVED		
TREE TO BE REMOVED		

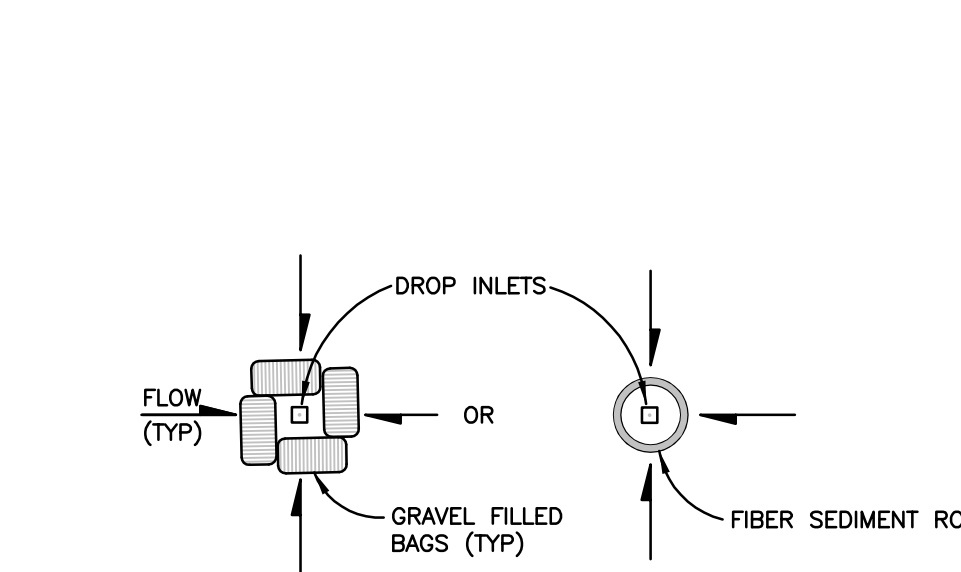


NOTES

- THE FIBER ROLLS SHALL BE PLACED ON SLOPE CONTOUR.
- FIBER ROLLS TO BE PLACED IN A ROW WITH THE ENDS TIGHTLY ABUTTING. USE STRAW, ROCKS, OR FILTER FABRIC TO FILL GAPS BETWEEN THE FIBER ROLLS AND TAMP THE BACKFILL MATERIAL TO PREVENT EROSION OR FLOW AROUND FIBER ROLLS.

FIBER ROLL

NOT TO SCALE



MINOR INLET PROTECTION

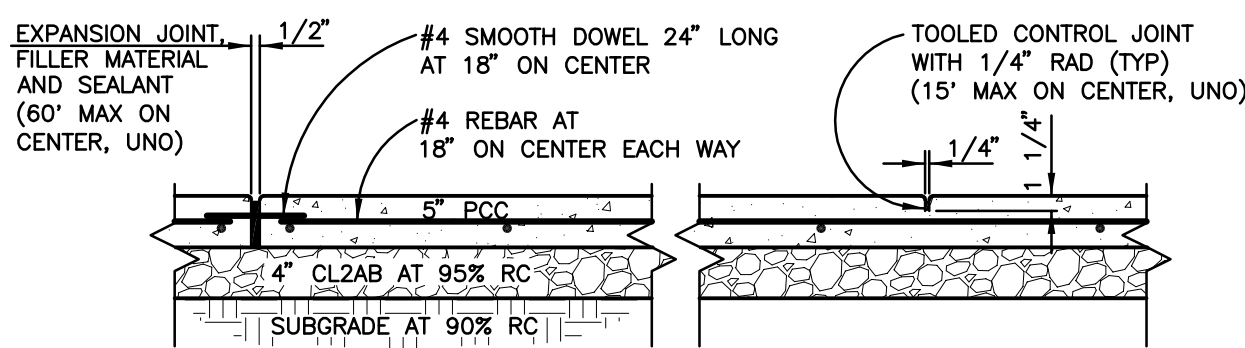
NOT TO SCALE

GENERAL NOTES

- ANY DISCREPANCY DISCOVERED BY CONTRACTOR IN THESE PLANS OR ANY FIELD OBSTRUCTIONS DISCOVERED BY CONTRACTOR THAT MAY DELAY OR OBSTRUCT THE PROPER COMPLETION OF THE WORK PER THESE PLANS SHALL BE BROUGHT TO THE ATTENTION OF THE CITY ENGINEER AND THE OWNER IMMEDIATELY UPON DISCOVERY. SAID NOTIFICATION SHALL BE IN WRITING.
- CONSTRUCTION CONTRACTOR AGREES THAT IN ACCORDANCE WITH GENERALLY ACCEPTED CONSTRUCTION PRACTICES, GENERAL CONTRACTOR WILL BE REQUIRED TO ASSUME SOLE AND COMPLETE RESPONSIBILITY FOR JOB SITE CONDITIONS DURING THE COURSE OF CONSTRUCTION OF THE PROJECT, INCLUDING SAFETY OF ALL PERSONS AND PROPERTY, THAT THIS REQUIREMENT SHALL BE MADE TO APPLY CONTINUOUSLY AND NOT BE LIMITED TO NORMAL WORKING HOURS; AND CONSTRUCTION CONTRACTOR FURTHER AGREES TO HOLD HARMLESS, INDEMNIFY AND DEFEND THE OWNER, THE ENGINEER AND HIS CONSULTANTS, AND THE CITY OF LOWER LAKE, THE COUNTY OF LAKE, AND EACH OF THEIR OFFICERS, EMPLOYEES AND AGENTS.
- CONTRACTOR SHALL INDEPENDENTLY REVIEW GROUND, TOPOGRAPHY, AND TREE CONDITIONS THROUGHOUT THE SITE, AND ASSUME WHOLLY AND UNCONDITIONALLY THE RISK OF COMPLETING THE WORK SET OUT ON THESE PLANS, REGARDLESS OF ROCK, WATER TABLE, OR OTHER CONDITIONS WHICH CONTRACTOR MAY ENCOUNTER IN THE COURSE OF THE WORK.
- ANY EXCESS MATERIALS SHALL BE CONSIDERED THE PROPERTY OF THE CONTRACTOR AND SHALL BE DISPOSED OF AWAY FROM THE JOB SITE IN ACCORDANCE WITH APPLICABLE LOCAL, STATE AND FEDERAL REGULATIONS.
- THE CONTRACTOR, AND HIS SUBCONTRACTORS, SHALL PREVENT ANY DUST NUISANCE BY WATERING AND/OR TREATING THE SITE WITH AN APPROVED DUST CONTROL PALLIATIVE.
- DURING CONSTRUCTION, THE CONTRACTOR SHALL BE RESPONSIBLE FOR CONTROLLING NOISE, ODORS, DUST AND DEBRIS TO MINIMIZE IMPACTS ON SURROUNDING ROADWAYS AND PROPERTIES.
- CONTRACTOR SHALL BE RESPONSIBLE THAT ALL CONSTRUCTION EQUIPMENT IS EQUIPPED WITH MANUFACTURER APPROVED MUFFLERS/Baffles.

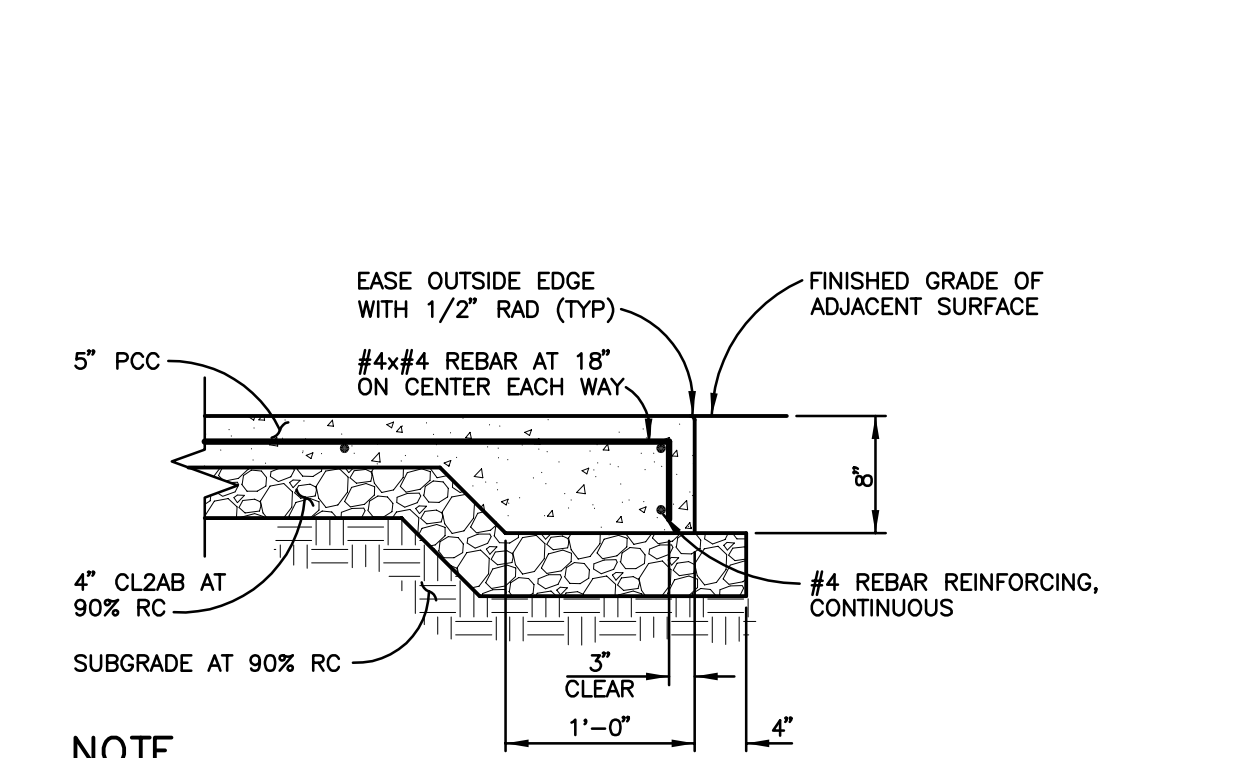
GENERAL UNDERGROUND NOTES

- NO GUARANTEE IS INTENDED THAT UNDERGROUND OBSTRUCTIONS, NOT SHOWN ON THESE PLANS, MAY BE ENCOUNTERED. THOSE SHOWN ARE BASED ON THE BEST INFORMATION AVAILABLE AND THE CONTRACTOR IS CAUTIONED THAT THE OWNER, AND THE ENGINEER, ASSUME NO RESPONSIBILITY FOR ANY OBSTRUCTION EITHER SHOWN OR NOT SHOWN ON THESE PLANS. THE CONTRACTOR SHALL COOPERATE WITH ALL UTILITY COMPANIES WORKING WITHIN THE LIMITS OF THIS PROJECT.
- CONTRACTOR SHALL NOT BEGIN EXCAVATION UNTIL ALL EXISTING UTILITIES HAVE BEEN MARKED IN THE FIELD BY THE APPLICABLE ENTITY RESPONSIBLE FOR THAT PARTICULAR UTILITY. THE CONTRACTOR SHALL NOTIFY EACH APPLICABLE ENTITY AT LEAST 48 HOURS BEFORE STARTING WORK.
- UNDERGROUND SERVICE ALERT: CALL TOLL FREE (800) 642-2444 AT LEAST 48 HOURS PRIOR TO EXCAVATION.
- CONTRACTOR SHALL UNCOVER EXISTING BURIED UTILITIES WITH UTILITY OWNERS TO VERIFY LOCATIONS AND ELEVATIONS OF UTILITIES. BURIED UTILITIES INCLUDE BUT ARE NOT LIMITED TO WATER MAINS AND LATERALS, STORM DRAINS, GAS MAINS AND LATERALS, ELECTRICAL DISTRIBUTION LINES AND TELEPHONE LINES. ALL UTILITIES CONFLICTING WITH THE PROPOSED CONSTRUCTION SHALL BE RELOCATED PRIOR TO THE START OF CONSTRUCTION.
- THE CONTRACTOR SHALL VERIFY EXISTING INVERTS PRIOR TO THE COMMENCEMENT OF ANY CONSTRUCTION. THE PROJECT AND/OR DESIGN ENGINEER MAY ADJUST THE GRADE OF NEW STORM DRAIN CONSTRUCTION ACCORDINGLY WITH CONCURRENCE FROM THE APPROPRIATE AGENCIES.
- DISTANCES AND INVERTS ARE TO AND AT THE CENTER OF THE MANHOLES, CLEANOUTS, DROP INLETS, CATCH BASINS, AND YARD DRAINS OR AS MARKED IN THE DRAWINGS.
- ALL UNDERGROUND IMPROVEMENTS SHALL BE INSTALLED AND APPROVED PRIOR TO PAVING.
- ALL MATERIAL, WORKMANSHIP AND CONSTRUCTION DETAILS SHALL CONFORM TO THE CITY OF SANTA ROSA DESIGN AND CONSTRUCTION STANDARD SPECIFICATIONS, INCLUDING ALL APPENDIX, STANDARD PLAN REVISIONS, AND SPECIAL PROVISIONS.
- EXISTING UNDERGROUND UTILITIES, INCLUDING ELECTRICAL & TELECOMMUNICATION LINES ENCOUNTERED DURING CONSTRUCTION OPERATIONS SHALL REMAIN AND BE PROTECTED UNLESS NOTED OTHERWISE ON THE PLANS. UTILITIES LINES DAMAGED BY CONSTRUCTION OPERATIONS SHALL BE IMMEDIATELY REPORTED TO THE RESIDENT ENGINEER, REPAIRED AND SERVICES RESTORED AT NO ADDITIONAL COST TO THE OWNER.
- FINAL CONSTRUCTED LOCATIONS OF UTILITY STRUCTURES, MAINS AND LATERALS SHALL BE AS DIMENSIONED, OR TO COORDINATES ASSIGNED ON THE PLANS, SECTIONS AND DETAILS.
- LOCATION, SIZE AND INVERT ELEVATION DATA SHOWN FOR EXISTING UTILITY FACILITIES ARE BASED ON RECORD, TOPOGRAPHIC AND FIELD SURVEY DATA, SOME OF WHICH WAS PROVIDED BY OTHERS. CONTRACTOR MUST POTHOLE TO LOCATE CONFIRM SIZE, AND WHERE INDICATED, DEPTH OF EXISTING UTILITIES PRIOR TO ANY UTILITY CONSTRUCTION. NOTIFY ENGINEER OF RESULTS, SOME RESULTS MAY IMPACT THE APPROVED DESIGN.



PCC WALK SECTION AND JOINT

NOT TO SCALE



- NOTE**
- THICKENED EDGE OCCURS WHERE CONCRETE ABUTS LANDSCAPE/PLANTING AREAS.

CONCRETE THICKENED EDGE

NOT TO SCALE

GRADING NOTES

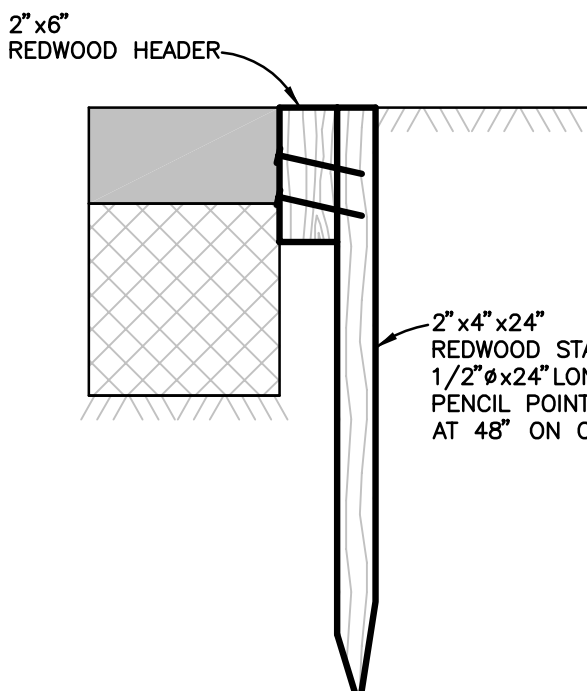
- ALL WORK SHALL COMPLY WITH APPENDIX CHAPTER J OF THE CALIFORNIA BUILDING CODE, AND WITH THE RECOMMENDATIONS OF THE SOILS TESTING LABORATORY REPRESENTATIVE IN THE FIELD. NO WORK SHALL COMMENCE UNTIL THE CONTRACTOR, GRADING CONTRACTOR, AND ALL RELATED SUBCONTRACTORS HAVE MET WITH THE SOILS TESTING LABORATORY REPRESENTATIVE TO REVIEW THE SITE, THE GRADING PLANS AND THE EARTHWORK REQUIREMENTS.
- AREAS TO BE DEVELOPED SHOULD BE CLEARED OF VEGETATION, EX ASPHALT, FOUNDATIONS AND DEBRIS. CLEARED AND GRUBBED MATERIAL SHOULD BE REMOVED FROM THE SITE AND DISPOSED OF. VOIDS CREATED DURING CLEARING SHALL BE BACKFILLED WITH ENGINEERED FILL AS SPECIFIED.
- AREAS TO BE GRADED SHOULD BE STRIPPED OF THE UPPER FEW INCHES OF SOIL CONTAINING ORGANIC MATTER. SOIL CONTAINING MORE THAN TWO PERCENT BY WEIGHT OF ORGANIC MATTER SHOULD BE CONSIDERED ORGANIC. ACTUAL STRIPPING DEPTH SHOULD BE DETERMINED BY SOILS TESTING LABORATORY REPRESENTATIVE IN THE FIELD AT THE TIME OF STRIPPING. THE STRIPPINGS SHOULD BE REMOVED FROM THE SITE.
- SAW CUT EXISTING PAVEMENTS ALONG LINES SHOWN, AND REMOVE AND PROPERLY DISPOSE OF EXISTING ASPHALT. EXISTING AGGREGATE BASE MATERIAL THAT CAN BE REMOVED WITHOUT CONTAMINATING IT MAY BE STOCKPILED FOR REUSE IN AREAS REQUIRING NEW PAVING OR BUILDING PADS. ALL EXCESS, UNSUITABLE, AND CONTAMINATED MATERIAL SHALL BE REMOVED FROM THE SITE.
- TRENCH EXCAVATIONS, SHORING, AND SAFETY IS THE SOLE RESPONSIBILITY OF THE CONTRACTOR. ATTENTION IS DRAWN TO THE STATE OF CALIFORNIA SAFETY ORDERS DEALING WITH "EXCAVATIONS AND TRENCHES".
- THE CONTRACTOR SHALL PERFORM EARTHWORK CALCULATIONS WHICH ACCOUNT FOR HIS PROPOSED METHODS OF GRADING AND TRENCHING OF ALL MATERIALS REGARDLESS OF CHARACTER AS HE DEEMS NECESSARY FOR BIDDING AND CONSTRUCTION PURPOSES. IT SHALL BE THE SOLE RESPONSIBILITY OF THE CONTRACTOR TO ACCOUNT FOR THE COST OF ANY NECESSARY IMPORT OF SELECT MATERIAL OR REMOVAL FROM THE SITE OF UNSUITABLE OR EXCESS FILL MATERIAL IN HIS BID IN ORDER TO ACHIEVE THE GRADES SHOWN ON THE PLAN. NO ADDITIONAL COMPENSATION SHALL BE ALLOWED FOR THIS ITEM OF WORK UNLESS THE OWNER REQUESTS ADDITIONAL WORK BE PERFORMED.
- IN THE EVENT THAT ARCHAEOLOGICAL REMAINS ARE ENCOUNTERED DURING GRADING OR TRENCHING, WORK SHALL BE HALTED TEMPORARILY AND A QUALIFIED ARCHAEOLOGIST SHALL BE CONSULTED FOR EVALUATION OF THE ARTIFACTS AND TO RECOMMEND FUTURE ACTION. THE LOCAL INDIAN COMMUNITY SHALL ALSO BE NOTIFIED AND CONSULTED IN THE EVENT ANY ARCHAEOLOGICAL REMAINS ARE UNCOVERED.

EROSION CONTROL NOTES

- EROSION AND SEDIMENT CONTROL DEVICES MUST BE INSTALLED PRIOR TO OCTOBER 1 AND ARE TO BE MAINTAINED THROUGHOUT CONSTRUCTION UNTIL PERMANENT VEGETATION IS ESTABLISHED. THE LOCATION OF SOME OF THE EROSION CONTROL DEVICES MAY HAVE TO BE ALTERED FROM THAT SHOWN ON THE APPROVED PLANS IF DRAINAGE PATTERNS DURING CONSTRUCTION ARE DIFFERENT FROM THE FINAL PROPOSED DRAINAGE PATTERNS. IT IS THE CONTRACTOR'S RESPONSIBILITY TO ACCOMPLISH EROSION CONTROL FOR ALL DRAINAGE PATTERNS CREATED AT VARIOUS STAGES DURING CONSTRUCTION. ANY DIFFICULTY IN CONTROLLING EROSION DURING CONSTRUCTION SHALL BE REPORTED TO THE OWNER/ENGINEER IMMEDIATELY.
- SOME ADDITIONAL EROSION CONTROL DEVICES MAY BE REQUIRED BY THE PROJECT ENGINEER.
- ALL EROSION AND SEDIMENTATION CONTROL DEVICES SHALL CONFORM TO THE LATEST EROSION AND SEDIMENTATION CONTROL REGULATIONS FOR THE STATE OF CALIFORNIA.
- FAILURE TO INSTALL, OPERATE, OR MAINTAIN ALL EROSION CONTROL MEASURES WILL RESULT IN ALL CONSTRUCTION BEING STOPPED ON THE JOB UNTIL SUCH MEASURES ARE CORRECTED.
- PRIOR TO COMMENCING LAND DISTURBANCE ACTIVITY, THE LIMITS OF LAND DISTURBANCE SHALL BE CLEARLY AND ACCURATELY DEMARCATED WITH STAKES, RIBBONS, OR OTHER APPROPRIATE MEANS. THE LOCATION AND EXTENT OF ALL AUTHORIZED LAND DISTURBANCE ACTIVITY SHALL BE DEMARCATED FOR THE DURATION OF THE CONSTRUCTION ACTIVITY. NO LAND DISTURBANCE SHALL OCCUR OUTSIDE THE APPROVED LIMITS INDICATED ON THE APPROVED PLANS.
- PRIOR TO ANY OTHER CONSTRUCTION A STABILIZED CONSTRUCTION ENTRANCE SHALL BE CONSTRUCTED AT EACH POINT OF ENTRY TO OR EXITING FROM THE SITE. THE CONSTRUCTION EXIT SHALL BE MAINTAINED IN A CONDITION WHICH WILL PREVENT TRACKING OR FLOW OF MUD ONTO PUBLIC RIGHT-OF-WAY, THIS MAY REQUIRE PERIODIC TOP DRESSING WITH STONE, AS CONDITIONS DEMAND, AND REPAIR AND/OR CLEAN OUT OF ANY STRUCTURES USED TO TRAP SEDIMENT, ALL MATERIALS SPILLED, DROPPED, WASHED OR TRACKED FROM VEHICLE OR SITE ONTO THE PUBLIC ROADWAY OR INTO STORM DRAIN MUST BE REMOVED IMMEDIATELY.
- IMMEDIATELY AFTER THE ESTABLISHMENT OF CONSTRUCTION ENTRANCES/EXITS, ALL PERIMETER EROSION DEVICES AND STORM WATER MANAGEMENT DEVICES SHALL BE INSTALLED PRIOR TO ANY OTHER CONSTRUCTION.
- ALL SILT BARRIERS MUST BE PLACED AS ACCESS IS OBTAINED DURING CLEARING. NO GRADING SHALL BE DONE UNTIL SILT BARRIER INSTALLATION IS COMPLETED.
- CONTRACTOR IS RESPONSIBLE FOR MONITORING DOWNSTEAM CONDITIONS THROUGHOUT THE CONSTRUCTION PERIOD AND FOR CLEARING ANY DEBRIS AND SEDIMENT CAUSED BY CONSTRUCTION.
- SEDIMENT AND EROSION CONTROL DEVICES MUST BE CHECKED AFTER EACH STORM EVENT. EACH DEVICE IS TO BE MAINTAINED OR REPLACED IF SEDIMENT ACCUMULATION HAS REACHED HALF THE CAPACITY OF THE DEVICE.
- CONTRACTOR IS RESPONSIBLE FOR CLEANING OUT ALL STORM DRAIN STRUCTURES AND PIPE PRIOR TO FINAL COMPLETION.
- AS A MINIMUM, ALL GRADED AREAS AND EXPOSED SOIL WITHIN THIS PROJECT SHALL BE SEED FOR EROSION CONTROL BY THE CONTRACTOR. SEED AND MULCH WILL BE APPLIED BY OCTOBER 1ST TO ALL EXPOSED SOIL WITHIN OR ADJACENT TO THE PROJECT. SEED AND FERTILIZER WILL BE APPLIED HYDRAULICALLY OR BY HAND AT THE RATES SPECIFIED BELOW. ON SLOPES, STRAW WILL BE APPLIED BY BLOWER OR BY HAND AND ANCHORED IN PLACE BY PUNCHING. ALL CRITICAL EARTHWORK OPERATIONS SHALL BE PERFORMED DURING THE DRY WEATHER SEASON, FROM MAY 1ST TO OCTOBER 1ST OR AS OTHERWISE APPROVED BY THE INSPECTOR OF RECORD. THE CLEARING OF EXISTING VEGETATION SHALL BE CONFINED WITHIN THE LIMITS OF ACTUAL EARTHWORK. STAGING OF THE WORK SHALL BE REQUIRED TO ENSURE THAT THE AMOUNT OF LAND CLEARED AT ANY TIME IS LIMITED TO THE AREA THAT CAN BE DEVELOPED DURING THE CONSTRUCTION PERIOD. STORM WATER SHALL NOT BE ALLOWED TO FLOW DIRECTLY DOWN UNPROTECTED SLOPES. ENERGY DISSIPATING STRUCTURES AND EROSION CONTROL DEVICES SHALL BE PLACED AT ALL DRAINAGE OUTLETS WHICH DISCHARGE TO NATURAL CHANNELS AS SHOWN ON THESE PLANS. ALL SEDIMENT TRAPS SHALL BE MAINTAINED BY THE CONTRACTOR UNTIL SUCH TIME THAT THE COUNTY ACCEPTS MAINTENANCE RESPONSIBILITY.

ITEM

	POUNDS PER ACRE
BROMUS CARINATUS (California Brome)	
ESCHSCHOLZIA C. "CREAM" (California Poppy)	
FESTUCA CALIFORNICA (California Fescue)	.12
NASSELLA PULCHRA (Purple Needlegrass)	.4
FERTILIZER (16-20-0 & 15% SULPHUR)	.12
STRAW MULCH	.500
	4000 OR 3500 LB. OF WOOD CELLULOSE



REDWOOD HEADER

NOT TO SCALE

Brelje & Race

CONSULTING ENGINEERS
475 Aviation Boulevard, Suite 120
Santa Rosa, CA 95403
v: 707-576-1322
f: 707-576-0469
www.brce.com



RANCHO COTATE HIGH SCHOOL

BASKETBALL COURT PAVEMENT REHABILITATION

5450 SNYDER LANE
ROHNERT PARK, CALIFORNIA

REVISIONS

NO.	DATE	DESCRIPTION

ON A FULL-SCALE DRAWING, LENGTH OF BAR BELOW IS 1-INCH. IF BAR MEASURES LESS THAN 1-INCH, THIS SHEET WAS PLOTTED AT A REDUCED SCALE, WHICH MAY REQUIRE ADJUSTMENT OF SCALE(S) SHOWN ON DRAWING.

PROJECT	DATE
4976.00	APRIL 2023
DRAWN BY	CHECKED BY
PIT	PVB

ABBREVIATIONS, LEGEND, NOTES & DETAILS

SHEET NO.

1 OF 3



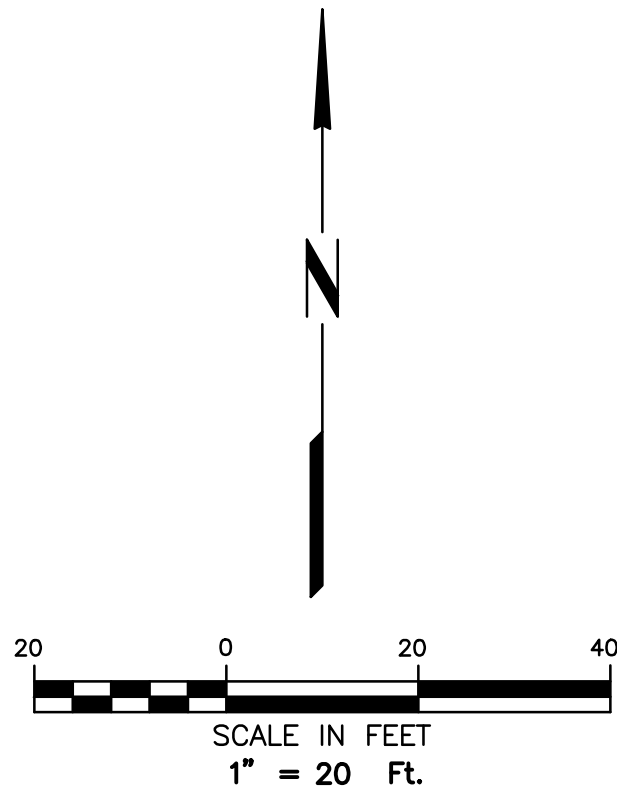
DEMOLITION NOTES

- [A] SAWCUT EXISTING IMPROVEMENTS.
- [B] EXISTING BASKETBALL STANDARD TO REMAIN. PROTECT IN PLACE.
- [C] GRIND ALL EXISTING PLAYGROUND STRIPING.
- [D] EXISTING HARDSCAPE TO REMAIN. PROTECT IN PLACE.
- [E] EXISTING SHED TO BE REMOVED AND RELOCATED IN SAME LOCATION AFTER PLACEMENT OF SEAL COAT.
- [F] EXISTING ELECTRICAL EQUIPMENT AND PAD TO REMAIN. PROTECT IN PLACE.
- [G] EXISTING RAISED PLANTER BED AND BENCH TO BE REMOVED AND RELOCATED IN SAME LOCATION AFTER PLACEMENT OF SEAL COAT.
- [H] EXISTING PLANTER TO REMAIN. PROTECT IN PLACE.
- [I] EXISTING FIRE HYDRANT TO REMAIN. PROTECT IN PLACE.

LEGEND

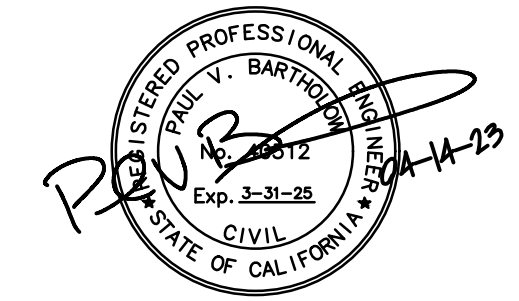
[Hatched Box] REMOVE ALL EXISTING SURFACE IMPROVEMENTS, INCLUDING, BUT NOT LIMITED TO, ASPHALT AND CONCRETE. BASE MATERIAL, HEADERBOARD, ETC. WITHIN THE LIMITS OF THE HATCHING IDENTIFIED HEREON AND PROPERLY DISPOSE OF OFFSITE, UNLESS OTHERWISE NOTED. AT THE CONTRACTORS OPTION, NON-CONTAMINATED BASE MATERIAL MAY BE REUSED.

ALL EXISTING UTILITY VAULTS, BOXES, ETC., TO REMAIN, UNLESS OTHERWISE NOTED. PROTECT IN PLACE.



Brelje & Race

CONSULTING ENGINEERS
475 Aviation Boulevard, Suite 120
Santa Rosa, CA 95403
v: 707-576-1322
f: 707-576-0469
www.brce.com



RANCHO COTATE HIGH SCHOOL

BASKETBALL COURT PAVEMENT REHABILITATION

5450 SNYDER LANE
ROHNERT PARK, CALIFORNIA

REVISIONS

NO.	DATE	DESCRIPTION

ON A FULL-SCALE DRAWING, LENGTH OF BAR BELOW IS 1-INCH. IF BAR MEASURES LESS THAN 1-INCH, THIS SHEET WAS PLOTTED AT A REDUCED SCALE, WHICH MAY REQUIRE ADJUSTMENT OF SCALE(S) SHOWN ON DRAWING.

PROJECT 4976.00	DATE APRIL 2023
DRAWN BY PIT	CHECKED BY PVB

DEMOLITION PLAN

SHEET NO.

2 OF 3



SHEET NOTES

- ① MATCH EXISTING IMPROVEMENTS.
- ② INSTALL CONCRETE THICKENED EDGE PER DETAIL, SHEET C1.
- ③ RAISE EXISTING UTILITY VAULT, BOXES, ETC TO NEW FINISHED GRADE.
- ④ CLEAN EXISTING STORM DRAIN INLET, INCLUDING PIPING (200'±) TO NEAREST DOWNSTREAM STRUCTURE. NO DIRT OR DEBRIS IS ALLOWED TO BE WASHED DOWNSTREAM.

PAVEMENT STRUCTURAL SECTION

LOCATION	AC*	CL2 AB**	PCC***	SEAL COAT
ASPHALT PLAYGROUND	0.25'	0.50'	—	YES
CONCRETE WALKWAY PER DETAIL SHEET C1	—	0.33'	0.42'	YES
SEAL COAT (DOUBLE)	—	—	—	YES

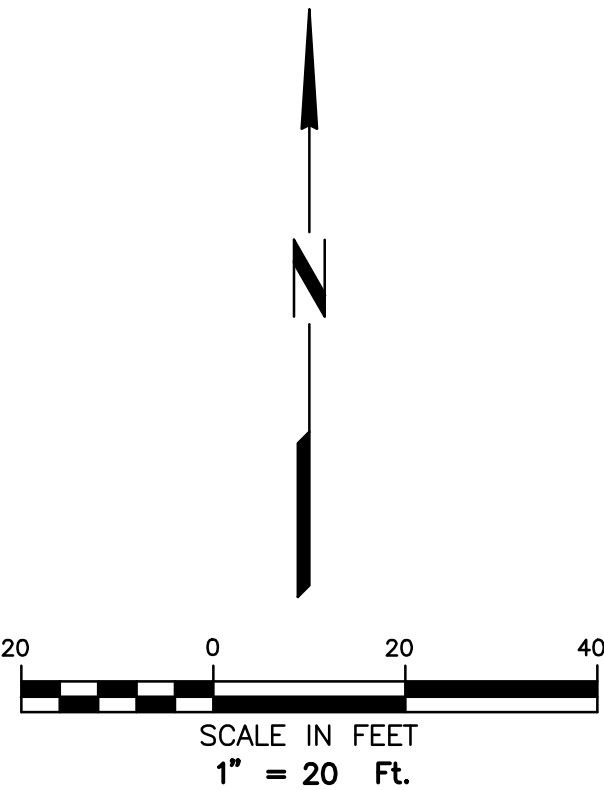
* TYPE A 1/2 MAX MEDIUM ASPHALT
** COMPACTED TO 95% RELATIVE COMPACTION
*** 5 SACKS PER CY

PRIOR TO PLACEMENT OF SEAL COAT (DOUBLE), CONTRACTOR SHALL CLEAN ALL EXISTING PAVEMENT AND CRACKS (3,000±LF) OF DIRT AND DEBRIS. AFTER CLEANING, ALL CRACKS SHALL BE FILLED WITH HOT-APPLIED CRACK FILLER. SEE PROJECT SPECIFICATIONS FOR ADDITIONAL REQUIREMENTS.

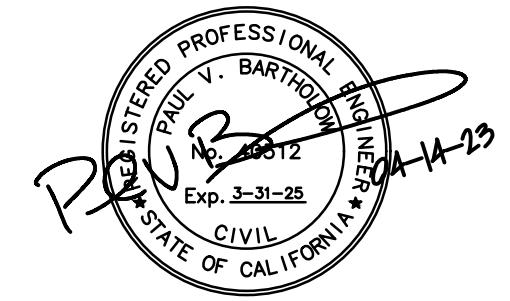
UPON COMPLETION OF SEAL COAT (DOUBLE), CONTRACTOR SHALL PAINT ALL SURFACE MARKINGS TO MATCH IN-KIND, OR AS OTHERWISE DIRECTED BY THE SCHOOL DISTRICT IN THE FIELD.

LEGEND

- FR FIBER ROLL, PER DETAIL, SHEET C1
- MINOR INLET PROTECTION, PER DETAIL, SHEET C1



Brelje & Race
CONSULTING ENGINEERS
475 Aviation Boulevard, Suite 120
Santa Rosa, CA 95403
v: 707-576-1322
f: 707-576-0469
www.brce.com



**RANCHO COTATE
HIGH SCHOOL**

**BASKETBALL
COURT
PAVEMENT
REHABILITATION**

5450 SNYDER LANE
ROHNERT PARK, CALIFORNIA

REVISIONS

NO.	DATE	DESCRIPTION

ON A FULL-SCALE DRAWING, LENGTH OF BAR BELOW IS 1-INCH. IF BAR MEASURES LESS THAN 1-INCH, THIS SHEET WAS PLOTTED AT A REDUCED SCALE, WHICH MAY REQUIRE ADJUSTMENT OF SCALE(S) SHOWN ON DRAWING.

PROJECT 4976.00	DATE APRIL 2023
DRAWN BY PIT	CHECKED BY PVB

**PAVEMENT
REHABILITATION
PLAN**

SHEET NO.

3 OF **3**